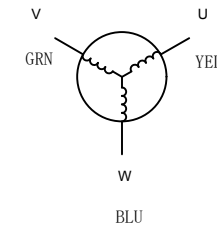
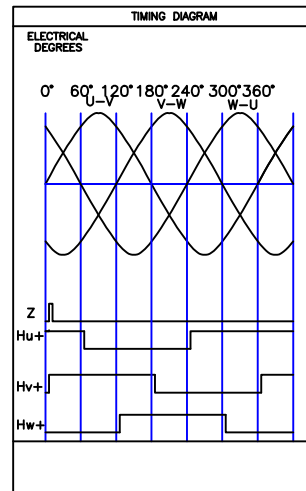
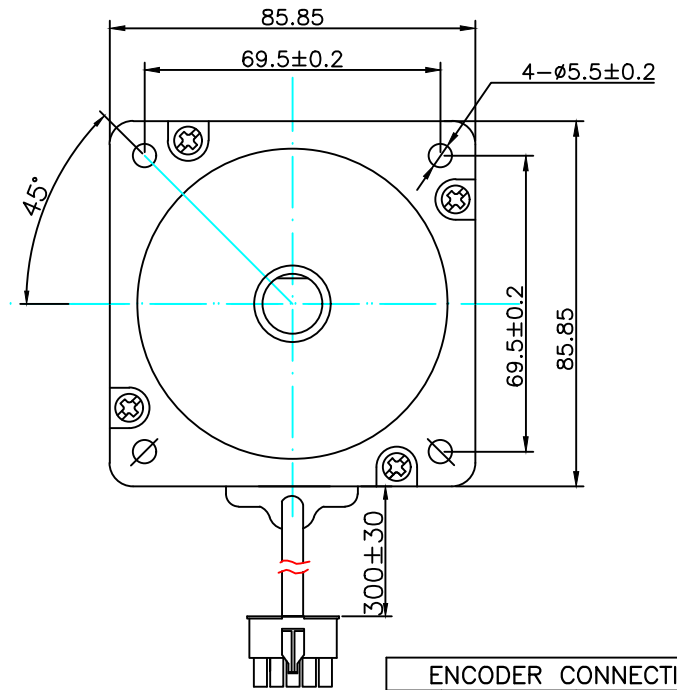
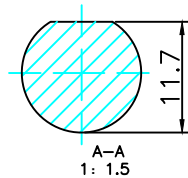
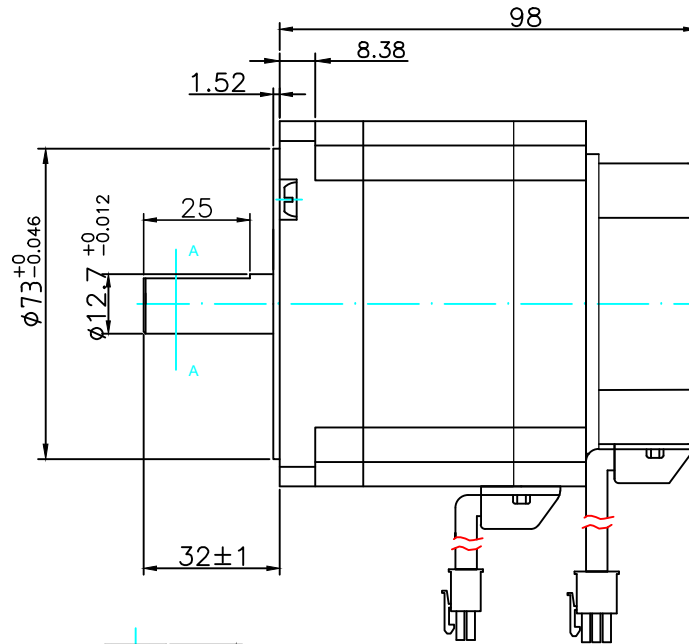
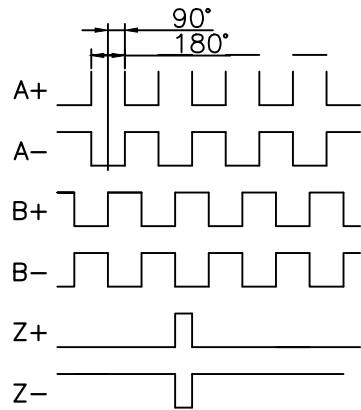


ENCODER
VOLTAGE +5VDC±5%
CURRENT 200mA _{Max}
FREQUENCY 0~125khz
TEMP. -20~100°C
RESOLUTION 1000



ENCODER CONNECTIONS

Pin	COLOR	SIGNAL
1	brn	A+
2	brn/blk	A-
3	gry	B+
4	gry/blk	B-
5	org	Z+
6	org/blk	Z-
7	yel	U+
8	yel/blk	U-
9	grn	V+
10	grn/blk	V-
11	wht	W+
12	wht/blk	W-
13	red	+5V
14	blk	GND
15		SHIELD

MOTOR CONNECTIONS

Pin	COLOR	SIGNAL
1	yel	U
2	grn	V
3	blu	W
4	yel/grn	GND

Motor Specification	
Resistance	0.17 Ω±10%
Inductance	0.4 mH
Voltage	24 VDC
Rated power	220 W
Rated Speed	3000rpm
Rated Current	12A
Rated Torque	0.7 Nm
Peak Current	36 A
Peak Torque	2.1 Nm
Ke(RMS)	4.3 V/Krpm
Rotor Inertia	0.8Kg.cm ²
Number of Poles	8
Weight	1.85 Kg

<h1>POSITEC</h1>		<h2>PSM86-2230B8E1NL</h2>		1:1